



JAMES HARVEST









SINCE THE START IN 1988, THE CORPORATE IDENTITY CLOTHING FROM JAMES HARVEST HAS HELPED THOUSANDS OF COMPANIES TO CREATE A GREAT TEAM SPIRIT AND A COHERENT PROFILE. AVAILABLE IN OVER 26 COUNTRIES AND WITH AN EXTENSIVE RANGE OF FASHION-FORWARD STYLES, THE JAMES HARVEST RANGE IS THE PERFECT CHOICE TO SHOWCASE YOUR CORPORATE IDENTITY.

THE JAMES HARVEST SPORTSWEAR COLLECTION IS BASED ON AMERICAN COLLEGIATE FASHION AND IS CHARACTERISED BY ITS HIGH QUALITY.

WE PUT A LARGE AMOUNT OF EFFORT INTO THE DESIGN OF OUR STYLES IN ORDER TO MAKE THE CLOTHES BOTH FUNCTIONAL AND FASHIONABLE.

EXPERIENCE CONTINUES TO SHOW THAT MANY BUSINESS AND ORGANISATIONS THAT REGARD QUALITY AS AN IMPORTANT ELEMENT IN THEIR MARKETING COMMUNICATIONS REGULARLY CHOOSE JAMES HARVEST SPORTSWEAR AS THEIR SUPPLIER OF IDENTITY CLOTHES AND ADVERTISING GARMENTS.





POLOS & T-SHIRTS

10 AMERICAN U	19 TWOVILLE	23 SUNSET
11 AMERICAN V	19 WHAIFORD	23 GREENVILLE
11 AMERICAN SUPREME POLO	21 LARKFORD	26 WALCOTT
12 DEVONS	21 PORTWILLOW	27 PINEDALE
18 BROOKINGS	22 NEPTUNE	

SWEATERS

13 HOPEDALE CREWNECK	15 MELVILLE HEIGHTS	20 PARKWICK
13 HOPEDALE HOODIE	17 HARDIN HEIGHTS	27 KEYPORT
15 ALDER HEIGHTS	17 WESTWOOD HEIGHTS	

SHIRTS

44 ALLEN OXFORD	47 JUPITER	49 HIGHWOODS
45 BURLINGHAM	47 TOWNSEND	
45 ACTON	49 LANDER	

KNITS

53 ASHLAND TURTLE	55 ASHLAND U	59 PONCHO
53 ASHLAND CARDIGAN	57 BROCKWAY	
55 ASHLAND V	57 FLATWILLOW	

OUTERWEAR

24 KINGSLEY VEST	31 WOODLAKE HEIGHTS VEST	38 NORDMONT
25 KINGSLEY	32 MYERS	38 BRINKLEY
25 NORTHVILLE	33 LOCKWOOD	39 DEER RIDGE
28 FRANKLIN	33 MILES	39 DEER RIDGE VEST
29 WINCHESTER	34 RICH HILL	43 HERITAGE JACKET
29 LODGETOWN	35 RICHMOND/SANTA ANA	
31 WOODLAKE HEIGHTS	35 COVENTRY	

TROUSERS & CAPS

59 OFFICER	61 L.A.	61 BURNWOOD
------------	---------	-------------

SYMBOLS



CONTAINS
RECYCLED
MATERIALS



STRETCH



CONTAINS
ORGANIC
COTTON



TAPED SEAMS



MIGRATING
TO ORGANIC
COTTON



WATER
RESIST



MIGRATING
TO RECYCLED
MATERIALS



WATERPROOF
MATERIAL >2K



OEKO-TEX
STANDARD
100
TESTED



WATERPROOF
AND TAPED SEAMS



UP TO 60°C
WASH



EASY CARE
TREATED

RESPONSIBILITY & SUSTAINABILITY

CLIMATE IMPACT AND EMISSIONS

Research shows that 80 % of the climate impact from Swedish clothing comes from the production phase*. By doubling the active lifespan of a garment, the climate impact can be almost halved. Thus, the most important thing we can do is to increase the longevity of the products. That is why classic design and quality products - a concept that will never be out-of-fashion - is the very core of everything we do. In addition, work actively with our suppliers regarding energy efficiency, energy source and production techniques to further reduce our total impact.

A significant share of a garment's total environmental footprint is traceable to the choice of material. Therefore, we strive to use more preferred materials - such as recycled polyester and organic cotton - whenever possible. However, all materials have advantages and disadvantages from a sustainability perspective and priority is always quality and durability to enable a long lifecycle.

For transportation, that also significantly contributes to greenhouse gas emissions, we have to main strategies. Firstly, we constantly work with evaluating our processes to streamline our routines and plan our purchases well in advance. Within the New Wave Group, shipments of different sister companies are clubbed together as much as possible so that containers are always optimally filled during transport. We are also very careful which partners we choose to work with and only use well-known carriers we know are at the forefront from a sustainability perspective, both for sea freight and land transport. Secondly, we strive to influence the transportation companies that we are working with. New Wave Group is a member of "Clean Shipping Index", that aims to impact the shipping companies to use cleaner vessels by ranking the most high-performing ships.

PROGRESSIVE WORK WITH CHEMICALS

All suppliers must follow the requirements in our Restricted Substance List. The list has been designed in accordance with legislation such as REACH, but also taking industry recommendations and standards such as Oeko Tex into account. Through our parent company New Wave Group, we take part of the Swedish Chemicals Group organized by RISE to receive the most updated information on chemical legislation and developments. With this information we can actively work to reduce and replace chemicals in line with best available techniques.

IMPROVING WORKING CONDITIONS

We are aware of the great responsibility that comes with sourcing goods in countries which have not come as far as us when it comes to working conditions and environmental issues. We must ensure that the business operations of our suppliers respect national requirements as well as international conventions on human rights. Successful work requires devotion and patience. Many of the challenges we face are global problems like poverty and malfunctioning welfare systems. In this sense, social compliance does not offer a quick fix. We believe it is essential to be presented on-site. For this reason, we have local offices in Asia taking care of the everyday work with supplier auditing, monitoring and dialogue. Our full-time CSR staff are educated and well-experienced on labor conditions and environmental aspects of the production sites. Their work is leading the development.

CODE OF CONDUCT - AMFORI BSCI

Our Code of Conduct summarizes what we expect from all our suppliers when it comes to social and environmental responsibility. It contains requirements such as minimum wage, working hours, prohibition of child labor and several other requirements from global frameworks such as the ILO Conventions and the UN Declaration of Human Rights. Through New Wave Group we are a member of amfori BSCI (Business Social Compliance Initiative) and have adopted the amfori BSCI Code of Conduct. Today, more than 2000 companies all over the world have joined amfori BSCI and have adopted the code. Together we reach out to approximately 30 000 unique suppliers worldwide, which empowers our voice and influence in social dialogue. In addition to internal audits and supplier visits, we are obliged to implement and follow up the Code of Conduct through third-party audits.

Amfori BSCI is a commitment, and the most important work begins when the inspection is completed, and the findings are to be remedied. Therefore, it is not permitted to use amfori BSCI as a label or a guarantee for individual products. The amfori BSCI logo may only be used to prove membership so that the customer can feel confident that we take long-term responsibility - even for suppliers who need to improve.

INTERNATIONAL ACCORD

New Wave Group has signed the International Accord for Health and Safety in the Textile and Garment Industry. The original Accord - or the Accord on Fire and Building Safety in Bangladesh - came into force in 2013, only weeks after the Rana Plaza disaster where a factory building collapsed. New Wave Group signed the agreement, which was a legally

binding agreement for improved safety in the textile industry in Bangladesh with focus on structural, electrical and fire safety. The agreement meant, among other things, that factories undergo electrical and building inspections as well as training and education in fire safety. Now the original Accord has developed into the International Accord, which New Wave Group has also signed. In addition to fire and building safety, the International Accord also covers general work environment, and the ambition is to expand the program to other production countries, hence the name change. The Accord is a unique initiative that has a significant impact on the daily life of millions of textile workers. We are proud to be a part of this initiative.

RECYCLING FOR A SUSTAINABLE SOCIETY

To collect and recycle waste packages is a wonderful way to reduce environmental impact and create cradle-to-cradle circulation. We embrace the national collecting system where we operate. In Sweden, we are affiliated with FTI (Förpackningsinsamlingen) and comply with Producer Responsibility obligations.

PREPARING FOR UPCOMING LEGISLATIONS

Driven by the European Green Deal, we are facing many new laws and regulations related to sustainability the coming years. For example, the Corporate Sustainability Reporting Directive (CSRD), and the Ecodesign for Sustainable Products Regulation (ESPR). All place higher demands on traceability and transparency and will have a great impact on our operations in the future. Therefore, we put a lot of focus on working our processes and introducing support systems to be able to manage increased demands on information and transparency.

To learn more about our work with Sustainability, visit www.jobmantextet.se

*Source: Mistra Future Fashion 2019



BIODEGRADABLE, COMPOSTABLE PACKAGING

Our packaging is made from PLA material, a biodegradable polymer produced from renewable plant resources. It is a sustainable material, reduces reliance on fossil fuels and non-renewable resources and lowers the carbon footprint.

Ambient temperature and humidity can affect the time frame of the biodegradation process. By choosing PLA material, we reduce the amount of plastic waste and the problems associated with the lengthy degradation time of traditional plastics.



Our garments containing organic cotton and/or recycled materials is marked as follows.

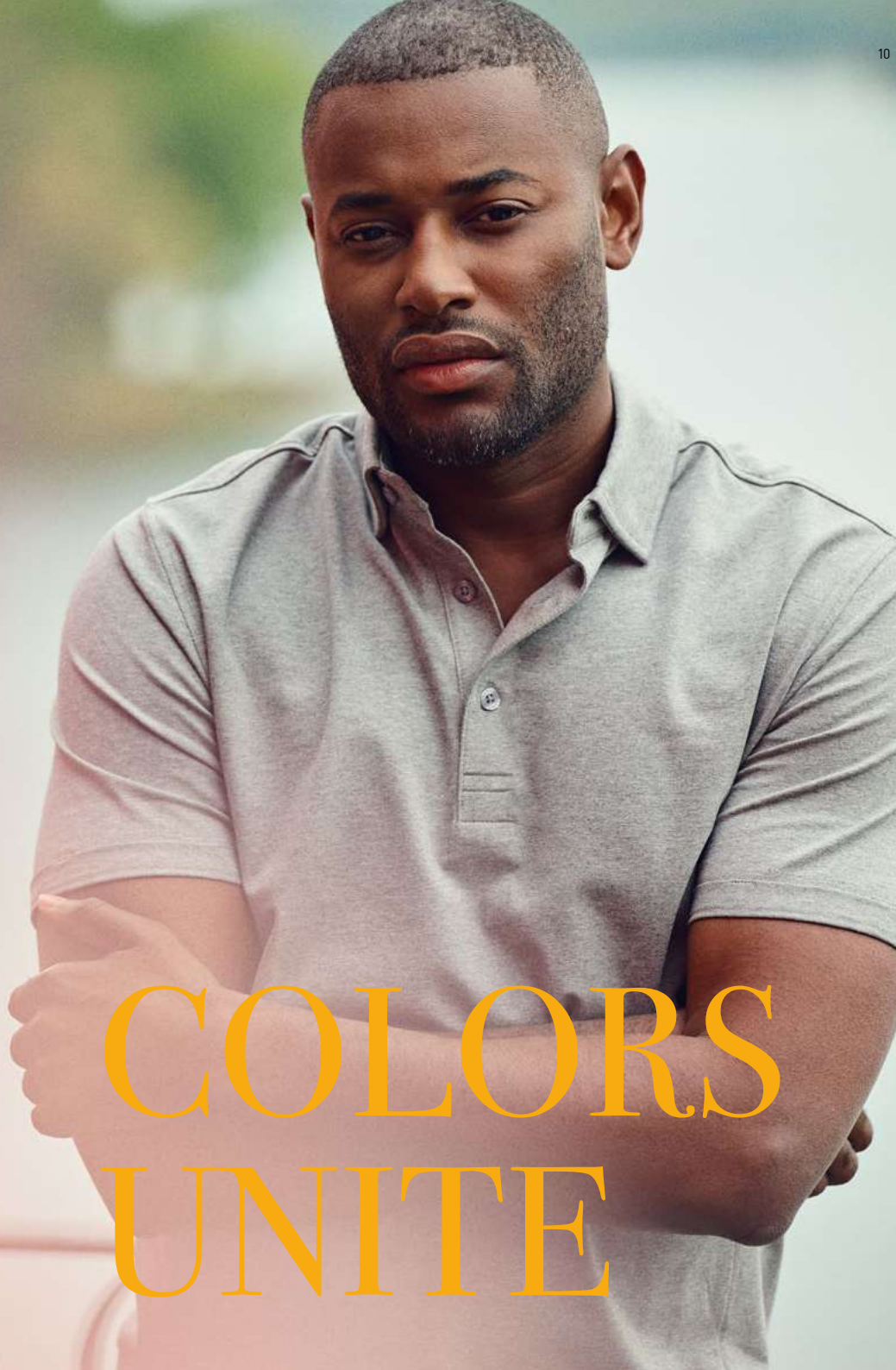


MOVING TOWARDS PREFERRED FIBERS AND MATERIALS

Transitioning our existing products to preferred fibers and raw materials is an ongoing process. Any garment marked with the symbol above is in the process of being transferred to organic cotton and/or recycled materials. This indicates that, upon restocking, the item will be made with the preferred materials. However, it's important to note that we cannot yet claim that the entire stock is exclusively comprised of these materials.

Textile Exchange* defines "preferred" fibers and raw materials as those that deliver consistently reduced impacts and increased benefits for climate, nature and people against conventional equivalents, through a holistic approach to transforming production systems.

* Textile Exchange is a global non-profit driving positive impact on climate change and nature across the fashion and textile industry. They guide and support a growing community of brands, retailers, manufacturers, farmers and others committed to climate action toward more purposeful production, right from the start of the supply chain.



COLORS UNITE



100 WHITE



600 NAVY



900 BLACK



AMERICAN V 2134018 ♂

S-3XL

Crewneck T-shirt for men and women. 2-layered stretch rib in the neck. Oeko-tex certified.

100% RING-SPUN, COMBED AND ENZYME-WASHED COTTON (MELANGE 95% COTTON, 5% VISCOSE)

WOMAN

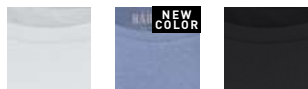


11

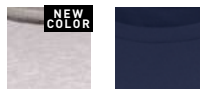
WOMAN



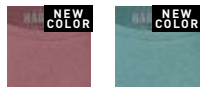
NEW



100 WHITE 514 SUMMER BLUE 900 BLACK



120 GREY MELANGE 600 NAVY



484 DUSTY RED 784 ALOE GREEN

AMERICAN U 2134017 ♂
AMERICAN U WOMAN 2124008 ♀

S-4XL
XS-XXL

U-neck T-shirt. 2-layered stretch rib in the neck. Oeko-Tex certified.

100% RING-SPUN, COMBED AND ENZYME-WASHED COTTON (MELANGE 95% COTTON, 5% VISCOSE)



100 WHITE 514 SUMMER BLUE 900 BLACK



120 GREY MELANGE 600 NAVY



484 DUSTY RED 784 ALOE GREEN

AMERICAN SUPREME POLO 2135039 ♂
AMERICAN SUPREME POLO WOMAN 2125038 ♀

S-4XL
XS-XXL

Stretch polo in single jersey with a hidden button down collar. The polo has folded cuffs at the sleeves for a modern look. Side panels and back yoke. Tone on tone buttons with Harvest logo engraved. New, improved fit. Delivered in a biobased, compostable bag. Oeko-Tex-certified.

95% ORGANIC COTTON, 5% ELASTANE, 215 G/M²





100 WHITE



514 SUMMER BLUE



900 BLACK



120 GREY MELANGE



600 NAVY



484 DUSTY RED



784 ALOE GREEN



DEVONS 2134019

XXS-4XL

Relaxed fit T-shirt with dropped shoulders and chest pocket. This item is packed in a compostable polybag. Oeko-Tex certified.

100% ORGANIC COTTON, 210 G/M²



120 GREY MELANGE

600 NAVY

HOPEDALE CREWNECK 2132028

XXS-4XL

Relaxed fit crewneck sweater with dropped shoulders. Brushed on the inside. Wide rib endings at sleeve and bottom hem. This item is packed in a biobased, compostable polybag. Oeko-Tex certified.

85% ORGANIC COTTON, 15% RECYCLED POLYESTER, 350 G/M²



484 DUSTY RED

784 ALOE GREEN



514 SUMMER BLUE

900 BLACK



120 GREY MELANGE

600 NAVY

HOPEDALE HOODIE 2132029

XXS-4XL

Relaxed fit hoodie with dropped shoulders and kangaroo pocket on the front. Brushed on the inside. Wide rib endings at sleeve and bottom hem. Tone on tone drawstring. This item is packed in a biobased, compostable polybag. Oeko-Tex certified.

85% ORGANIC COTTON, 15% RECYCLED POLYESTER, 350 G/M²



484 DUSTY RED

784 ALOE GREEN



514 SUMMER BLUE

900 BLACK



WOMAN



15

WOMAN



120 GREY
MELANGE



600 NAVY



704 MOSS
GREEN



900 BLACK



ALDER HEIGHTS 2132024 ♂ S-3XL
 ALDER HEIGHTS WOMAN 2122040 ♀ XS-XXL

College sweater. Certifications: Oeko-Tex, recycled polyester and ecological cotton.

85% ORGANIC COTTON, 15% RECYCLED PES, 300 G/M²



120 GREY
MELANGE



600 NAVY



704 MOSS
GREEN



900 BLACK



MELVILLE HEIGHTS 2132026 ♂ S-3XL
 MELVILLE HEIGHTS WOMAN 2122042 ♀ XS-XXL

Full zip sweater with half-moon in the neck. Contrast, metal look nano membrane zip at center front and side pockets. Brushed on the inside. Ribbed ending at sleeves and bottom hem. Oeko-Tex 100 certified.

85% ORGANIC COTTON, 15% RECYCLED PES, 300 G/M²



WOMAN

120 GREY
MELANGE

600 NAVY

704 MOSS
GREEN

900 BLACK



HARDIN HEIGHTS 2132025 ♂
HARDIN HEIGHTS WOMAN 2122041 ♀

S-3XL
XS-XXL

Hoodie with raglan sleeves and half-moon in the neck. Tone on tone drawstrings with rubber bullet point end. Kangaroo pocket on the front. Brushed on the inside. Ribbed ending at sleeves and bottom hem. Certificates: Oeko-Tex 100, recycled polyester & ecological cotton.

85% ORGANIC COTTON, 15% RECYCLED PES, 300 G/M²

WOMAN

120 GREY
MELANGE

600 NAVY

704 MOSS
GREEN

900 BLACK



WESTWOOD HEIGHTS 2132027 ♂
WESTWOOD HEIGHTS WOMAN 2122043 ♀

S-3XL
XS-XXL

Hooded sweater with full zip and half-moon in neck. Contrast, metal look nano membrane zip at center front and side pockets. Tone in tone drawstrings with rubber bullet point end. Brushed inside. 1x1 rib ending at sleeves and bottom hem. Oeko-Tex 100 certified.

85% ORGANIC COTTON, 15% RECYCLED POLYESTER, 300 G/M²



WOMAN



REGULAR FIT



MODERN FIT



BROOKINGS REGULAR 2135037 ♂
BROOKINGS MODERN 2135038 ♂
BROOKINGS WOMAN 2125037 ♀

S-4XL
S-XXL
XS-XXL

Polo con maniche raglan. Bottini in metallo. Spacchetti laterali e bordo manica a costine. Brookings è disponibile in tre vestibilità: la tradizionale Regular, la più aderente Modern e la versione donna.

52% COTTON, 45% RECYCLED POLYESTER, 3% ELASTANE, 190 G/M²

WOMAN



100 WHITE

120 GREY
MELANGE

600 NAVY

704 MOSS
GREEN

900 BLACK



TWOVILLE 2114005 ♂
TWOVILLE WOMAN 2124005 ♀

S-3XL
XS-XXL

Modern style round neck t-shirt. Slub tricot cotton fabric.

100% COTTON [120 GREY MEL. 85% COTTON/15% VISCOSE], 160 G/M²

WOMAN



100 WHITE

120 GREY
MELANGE

600 NAVY

704 MOSS
GREEN

900 BLACK



WHAILFORD 2114006 ♂
WHAILFORD WOMAN 2124006 ♀

S-3XL
XS-XXL

V-neck t-shirt in modern style. Slub tricot cotton fabric.

100% COTTON [120 GREY MEL. 85% COTTON/15% VISCOSE], 160 G/M²

131 GREY
MELANGE606 DARK BLUE
MELANGE406 RED
MELANGE

900 BLACK



600 NAVY

PARKWICK 2111033 ♂
PARKWICK WOMAN 2121034 ♀

S-3XL
XS-XXL

Hooded jacket in double face with fleece on the inside. Metal zip front and right chest pocket. Rib at bottom hem and sleeve cuffs.

100% COTTON SHELLFABRIC, 100% POLYESTER INSIDE, 320 G/M²

WOMAN



131 GREY
MELANGE



606 DARK BLUE
MELANGE



406 RED
MELANGE



906 BLACK
MELANGE



506 LIGHT BLUE
MELANGE

LARKFORD 2135030 ♂
LARKFORD WOMAN 2125031 ♀

S-3XL
XS-XXL

Piqué shirt with button-down collar, detail in Oxford inside collarstand, rib in cuffs in contrast.

100% COMPACT COTTON, 250 G/M²



131 GREY
MELANGE



606 DARK BLUE
MELANGE



406 RED
MELANGE



906 BLACK
MELANGE

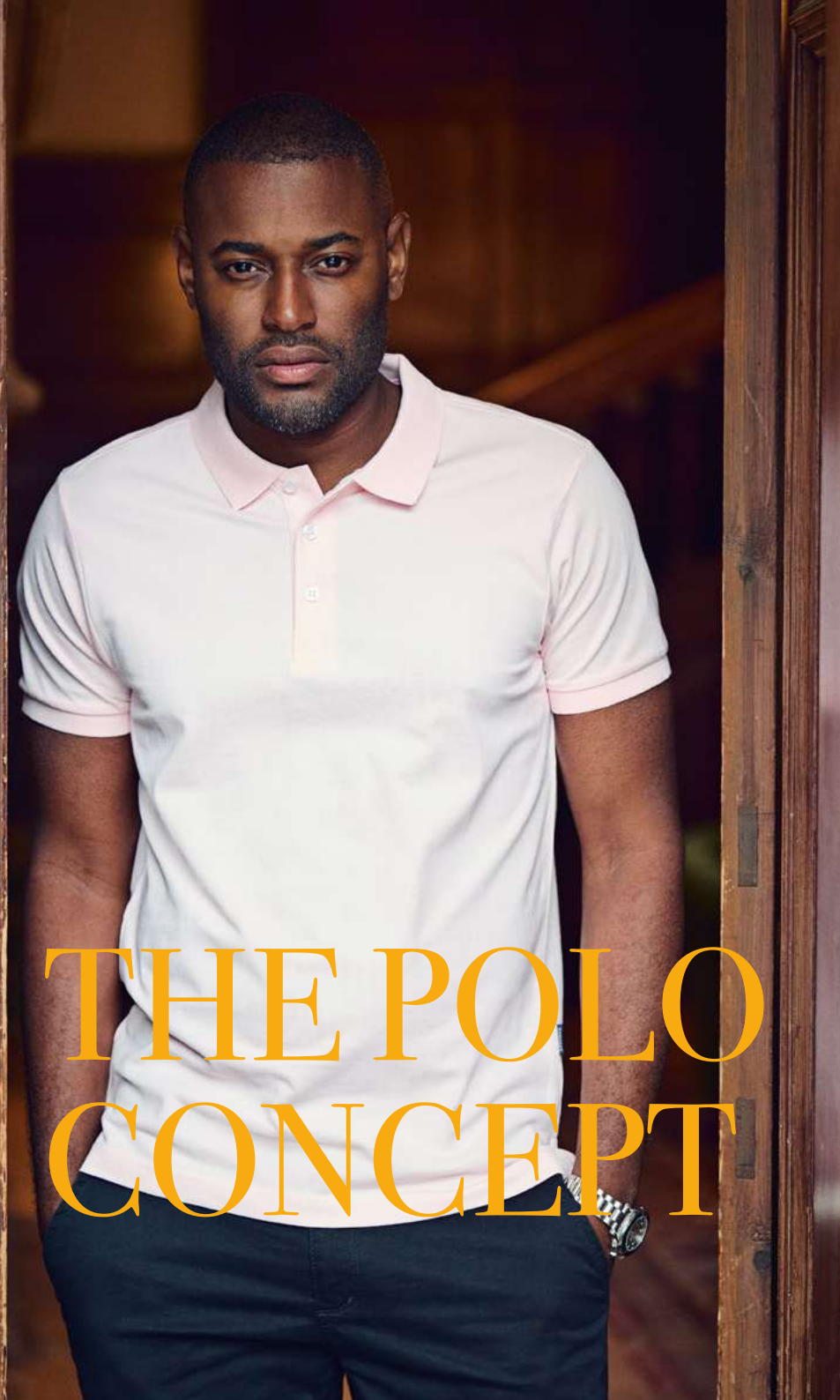


506 LIGHT BLUE
MELANGE

PORTWILLOW 2114008 ♂ XS-3XL

Roundneck T-shirt with chest pocket in contrast colour.

100% COMBED, RINGSPUN COTTON, 160 G/M². PRE-SHRUNK.



THE POLO CONCEPT

22

WOMAN



REGULAR FIT



MODERN FIT



100 WHITE



212 DEEP SUN



630 BLUE HEAVEN



400 RED



488 DARK RED



919 ANTHRACITE



600 NAVY



622 PETROL



900 BLACK



NEPTUNE REGULAR 2135031 ♂
 NEPTUNE MODERN 2135032 ♂
 NEPTUNE WOMAN 2125033 ♀

S-4XL
 S-XXL
 XS-XXL

Polo shirt with side slits and matching buttons. Enzyme wash for a softer and smoother surface. The treatment makes the polo shirt pre shrunk. Neptune is available in three stylish cuts; the traditional Regular, the more fitted Modern and the carefully figured Woman.

100% COMBED COMPACT COTTON, 200 G/M²

WOMAN



REGULAR FIT



MODERN FIT

WOMAN



REGULAR FIT



MODERN FIT



100 WHITE

600 NAVY

471 LIGHT PINK



308 ORANGE VINTAGE

668 LIGHT TURQUOISE

900 BLACK



400 RED

729 SPORT GREEN

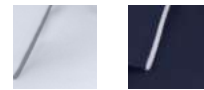


SUNSET REGULAR 2135033 ♂
 SUNSET MODERN 2135034 ♂
 SUNSET WOMAN 2125034 ♀

S-4XL
 S-XXL
 XS-XXL

Polo shirt with side slits and white buttons in a comfortable cotton/Lycra® material. Sunset is available in three stylish cuts; the traditional Regular, the more fitted Modern and the carefully figured Woman.

95% COMBED COMPACT COTTON, 5% LYCRA®, 200 G/M²



100 WHITE

600 NAVY



400 RED

729 SPORT GREEN



631 BRIGHT BLUE

900 BLACK

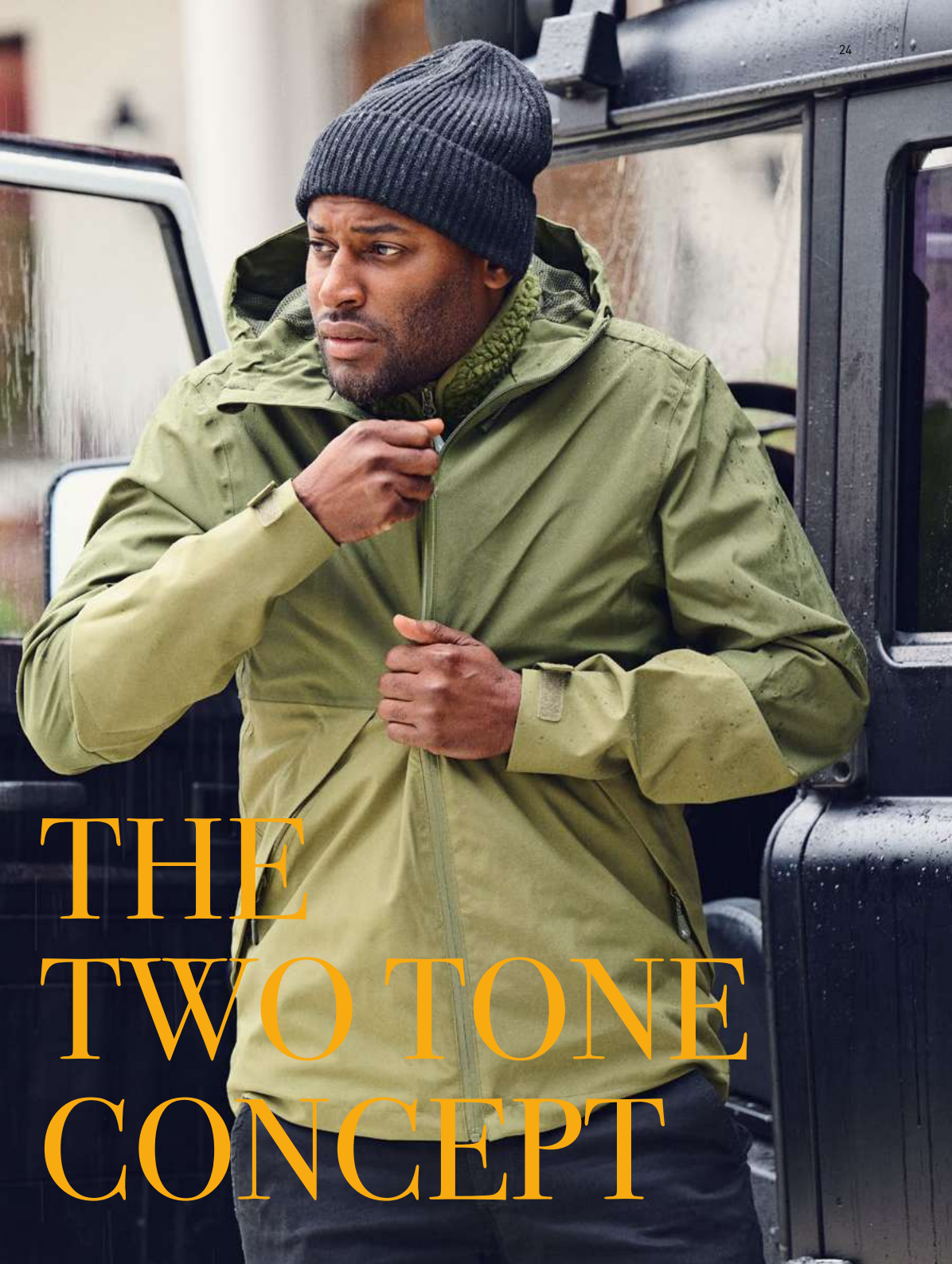


GREENVILLE REGULAR 2135035 ♂
 GREENVILLE MODERN 2135036 ♂
 GREENVILLE WOMAN 2125036 ♀

S-4XL
 S-XXL
 XS-XXL

Polo shirt with a classic white stripe at collar and sleeve. Comfortable stretch material in Lacost knit. Enzyme washed. Three mother of pearl-look buttons. Woman version with shorter placket and no buttons. Grey stripe on white polo shirts. Greenville is available in three stylish cuts; the traditional Regular, the more fitted Modern and the carefully figured Woman. Oeko-Tex certified.

95% RINGSPUN, COMBED COTTON, 5% LYCRA®, 200 G/M²



THE TWO TONE CONCEPT

WOMAN



KINGSLEY VEST 2111501 ♂
KINGSLEY VEST WOMAN 2121505 ♀



S-3XL
XS-XXL



600 NAVY

Bicolour sherpa fleece vest. Contrast fabric on chest and piping along the edges of the seams. Chest pocket and side pockets with zippers. This item is packed in a biobased, compostable polybag



704 MOSS GREEN

SHERPA FLEECE: 100% RECYCLED POLYESTER, 400G/M². CONTRAST FABRIC: 50% RECYCLED POLYESTER, 50% POLYESTER, 160 G/M²



900 BLACK



KINGSLEY 2111500 ♂
KINGSLEY WOMAN 2121504 ♀

Bicolour sherpa fleece sweater. Contrast fabric on chest and piping along the edges of the seams. Chest pocket and side pockets with zippers. This item is packed in a biobased, compostable polybag

SHERPA FLEECE: 100% RECYCLED POLYESTER, 400G/M². CONTRAST FABRIC: 50% RECYCLED POLYESTER, 50% POLYESTER, 160 G/M²



S-3XL
XS-XXL



600 NAVY



704 MOSS GREEN



900 BLACK



NORTHVILLE 2111041 ♂
NORTHVILLE WOMAN 2121044 ♀

Functional, two-tone shell jacket with taped seams. Waterproof zipper at center front and reversed nylon zippers at side pockets. Velcro adjustable sleeves. Mesh lining with inner pocket. Reflective tag on center back. Hood and bottom hem adjustable with elastic cord.

SHELL: 50% POLYESTER, 50% RECYCLED POLYESTER, WP 5000/ MVP 5000, CO BIONIC-FINISH ECO WATER RESISTANT FINISH. LINING: 100% POLYESTER MESH. SLEEVE LINING: 100% RECYCLED POLYESTER



WP 5000
MVP 5000

S-3XL
XS-XXL



600 NAVY



704 MOSS GREEN



900 BLACK



WOMAN



NEW



600 NAVY



704 MOSS
GREEN



900 BLACK



WALCOTT 2134020 ♂
WALCOTT WOMAN 2124009 ♀

S-4XL
XS-XXL

Round neck Tshirt in single jersey. The chest pocket is in contrast color. Delivered in a biobased, compostable bag.

100% ORGANIC COTTON, 180 G/M²

WOMAN



NEW



600 NAVY

704 MOSS
GREEN

900 BLACK



PINEDALE 2135040 ♂
PINEDALE WOMAN 2125039 ♀

S-4XL
XS-XXL

Piqué polo with chest pocket, ribbed collar and sleeve endings in contrast color. Tone on tone buttons. New Fit. Delivered in a biobased, compostable bag.

60% ORGANIC COTTON, 40% RECYCLED POLYESTER, 200 G/M²

WOMAN



NEW



600 NAVY

704 MOSS
GREEN

900 BLACK



KEYPORT 2112032 ♂
KEYPORT WOMAN 2122044 ♀

S-4XL
S-XXL

Full zip, hooded sweater. The front part, which is lightly padded, is in contrast color. The sweater has two zipped side pockets, raglan sleeves and thumb openings. Delivered in a biobased, compostable bag.

FABRIC 1: 100% RECYCLED POLYESTER, 260 G/M², BRUSHED INSIDE
FABRIC 2: 50% RECYCLED POLYESTER, 50% POLYESTER
PADDING: 100% RECYCLED POLYESTER

WOMAN



600 NAVY



704 MOSS GREEN



900 BLACK



FRANKLIN 2111039 ♂
FRANKLIN WOMAN 2121043 ♀

S-3XL
XS-XXL

Lightweight jacket with recycled Repreve padding. Fully lined with inner left chest pocket. YKK main zipper and blind zipped chest and side pockets. Ribbed sleeve cuff and bottom seam.

SHELL FABRIC: 100% RECYCLED POLYESTER, 56 G/M² WITH 100% RECYCLED POLYESTER REPREVE PADDING. LINING: 100% NYLON

WOMAN



600 NAVY

704 MOSS
GREEN

900 BLACK

WP 5000
MVP 5000WINCHESTER 2111038 ♂
WINCHESTER WOMAN 2121042 ♀S-3XL
XS-XXL

Padded jacket with raglan sleeves. Bonded with fleece.

50% RECYCLED POLYESTER /
50% POLYESTER,
BONDED WITH FLEECE, C6 FINISHING

WOMAN



600 NAVY

704 MOSS
GREEN

900 BLACK

WP 3000
MVP 3000LODGETOWN 2131042 ♂
LODGETOWN WOMAN 2121040 ♀S-3XL
XS-XXL

Wind and water repellent softshell jacket. Reversed waterproof zipper at center front and side pockets. Inner pocket with zipper on the left side. Detachable hood. Adjustable velcro closure at bottom sleeves. Hood and seam are adjustable with elastic cords. Hidden embroidery zipper on the inside.


SHELL: 100% POLYESTER, 285 G/M², BONDED WITH 100% POLYESTER BIRDS EYE,
WP 3000/MVP 3000. LINING: 100% POLYESTER (SLEEVES) + 100% POLYESTER MESH
(BODY)



WOMAN

WOMAN





WP 3000
MVP 3000

WOODLAKE HEIGHTS 2111037 ♂ S-3XL
 WOODLAKE HEIGHTS WOMAN 2121041 ♀ XS-XXL

Padded winter jacket. Reversed waterproof zipper at center front and side pockets. Side pockets finished together with the seam of the jacket on the inside, so they can be used as inner pockets as well. Adjustable press button closure at bottom sleeves. Hood adjustable with elastic cords on the sides, finished with an elastic tape at the seam.

SHELL: 100% RECYCLED PES, 230 G/M², BONDED WITH A PU MEMBRANE, WP 3000/ MVP 3000.
 PADDING: 100% RECYCLED PES REPREVE PADDING (BLUESIGN)



600 NAVY



704 MOSS GREEN



900 BLACK



WP 3000
MVP 3000

WOODLAKE HEIGHTS VEST 2111043 ♂ S-3XL
 WOODLAKE HEIGHTS VEST WOMAN 2121046 ♀ XS-XXL

Padded winter vest. Waterproof zipper at center front and side pockets. Side pockets double as inner pockets. Hood adjustable with elastic cords on the sides, finished with an elastic tape at the seam. This item is packed in a compostable polybag

SHELL: 100% RECYCLED POLYESTER, 230 G/M², BONDED WITH A KNITTED INTERLOCK FABRIC, WP 3000/ MVP 3000. PADDING: 100% RECYCLED POLYESTER REPREVE PADDING.



600 NAVY



704 MOSS GREEN



900 BLACK



32

WOMAN



542 SPORTY
BLUE



600 NAVY



900 BLACK



WP800 / MVP 6000



WP 10.000 / MVP 4600



MYERS 2131041 ♂
MYERS WOMAN 2121038 ♀

S-3XL
XS-XXL

Hybrid jacket of wind and water repellent softshell and heat-quilted interlock with high breathability. Softshell parts in sleeves, shoulders and hood. Body of heat-quilted interlock with microfleece inside. C6 treatment of the entire jacket. Adjustable hood opening and lower edge with elasticated waistband and Velcro strap. Zipper in inner pocket. Mesh-lined front piece. Extra ventilation through front pockets.

SOFT SHELL; 96% POLYESTER, 4% ELASTANE, 280 G/M². BONDED WITH 100% PES FLEECE. WP = 10,000, MVP = 4,600. BODY: THERMAL QUILTED INTERLOCK WITH MICRO FLEECE INSIDE: 100% POLYESTER, 280 GR / M². WP = 800, MVP = 6,000

WOMAN

542 SPORTY
BLUE

600 NAVY



900 BLACK

**WP 3000**
MVP 3000LOCKWOOD 2131502 ♂
LOCKWOOD WOMAN 2121502 ♀S-3XL
XS-XXL

Durable softshell jacket with good breathability. The fleece side is on the inside of the body, collar and sleeve top and on the outside at the sides and lower arms. Stretch edge band at the bottom and sleeve end.

PIQUÉ KNITTED SOFTSHELL, PLATED WITH FLEECE. WP3000/MVP3000. 100% POLYESTER, 320 G/M²

WOMAN

542 SPORTY
BLUE

600 NAVY



900 BLACK

MILES 2131501 ♂
MILES WOMAN 2121501 ♀S-3XL
XS-XXL

Smooth fleece jacket. The material is "Waffle-Knitted" for best insulation and moisture transport. Mesh lined pocket bags that also contribute to extra ventilation openings. Wind placket behind the main zipper. Thumb opening at the sleeve end.

94% POLYESTER, 6% ELASTANE, 260 G/M².



135 GREY MELANGE



607 NAVY MELANGE



907 ANTHRACITE MELANGE

RICH HILL 2131503 ♂
RICH HILL WOMAN 2121503 ♀

S-3XL
XS-XXL

Heavy knit fleece jacket. 100% Polyester yarn with melange effect. Brushed inside. Zippers and flatlock seams in contrast color. Zipped front pockets. Elastic bindings at bottom and btm sleeves.

100% POLYESTER YARN WITH MÉLANGE EFFECT. BRUSHED INSIDE.



RICHMOND 2132017 ♂
SANTA ANA 2122034 ♀

S-3XL
XS-XXL

Heavy knit fleece jacket with decorative flatlock seams and elastic tipping. Zippers at centre front and front pockets. Brushed on the inside for a soft feeling. Anti-pilling treated.

100 % POLYESTER, 320 G/M²



135 GREY MELANGE



607 NAVY MELANGE



907 ANTHRACITE MELANGE



COVENTRY 2131037 ♂
COVENTRY WOMAN 2121026 ♀

S-3XL
XS-XXL

Functional sport jacket with taped seams and waterproof zippers. Zipper opening at back and hood lining for embroidery and print. Detachable hood. Elastic adjustment at bottom hem.

100% POLYESTER WP 5000/MVP5000, TAPED SEAMS



WP 5000
MVP 5000



600 NAVY



900 BLACK





WOMAN



NEW



600 NAVY



900 BLACK

NORDMONT 2111042 ♂
NORDMONT WOMAN 2121045 ♀

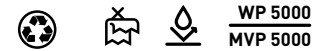
S-4XL
XS-XXL

Longer padded jacket with two-way zipper. Detachable hood, adjustable with elastic cords. Ribbed collar and rib ending at sleeves. Two zipped side pockets. Zipped internal chestpocket. Soft knitted fabric inside side pockets. Packed in a biobased, compostable polybag.

OUTER FABRIC: 100% RECYCLED POLYESTER, 67 G/M². PADDING: 100% RECYCLED POLYESTER, 160 G/M² IN BODY, 140 G/M² IN SLEEVES. LINING: 100 RECYCLED POLYESTER, 35 G/M²



WOMAN



BRINKLEY 2111036 ♂
BRINKLEY WOMAN 2121039 ♀

S-3XL
XS-XXL

Winter parkas with real down feeling. All vital seams taped. Adjustable with elastic cord at hood opening and at waist. Metal zip at front. Magnet buttons under front wind shield and under pocket flaps. Hidden push buttons at top and bottom front. Zipped chest pockets. 1 "Napoleon" pocket. Adjustable sleeve with push buttons and knitted rib inside.

100% POLYESTER, SHELL FABRIC; 100% PES WITH MEMBRANE, 5000WP/ 5000MVP. BIONIC-FINISH ECO WATER RESISTANT FINISH. PADDING FROM RECYCLED PES (BLUESIGN), 160 GSM (2,6 - 2,8 CLO) IN BODY, 140 GSM (2,3 - 2,5 CLO) IN SLEEVES. ALL VITAL SEAMS TAPED



600 NAVY



900 BLACK

WOMAN



Thermolite® 

DEER RIDGE 2131039 ♂
DEER RIDGE WOMAN 2121032 ♀

S-3XL
XS-XXL

Quilted lightweight jacket with Thermolite® Micro. Fully lined. Hidden hood in the collar (invisible zip). Reversed coil zippers. Elastic binding at bottom hem and sleeves. The jacket can be tucked into the frontpocket as a travelbag.

SHELL FABRIC; 100% PES, CIRE FINISH ON THE INSIDE, 56 GSM WITH 100% PES PADDING (THERMOLITE® MICRO, 60 GSM). LINING; 100% NYLON



600 NAVY



900 BLACK

WOMAN



Thermolite® 

DEER RIDGE VEST 2131040 ♂
DEER RIDGE VEST WOMAN 2121037 ♀

S-3XL
XS-XXL

Quilted lightweight vest with Thermolite® Micro. Fully lined. Reversed coil zippers. Elastic binding at bottom hem and arm openings. The vest can be tucked into the frontpocket as a travelbag.

SHELL FABRIC; 100% PES, CIRE FINISH ON THE INSIDE, 56 GSM WITH 100% PES PADDING (THERMOLITE® MICRO, 60 GSM). LINING; 100% NYLON



600 NAVY



900 BLACK







THE HERITAGE JACKET

WOMAN

43

LIMITED

EDITION



HERITAGE JACKET

- VINTAGE INSPIRED

A TRIBUTE TO OUR HERITAGE.
ONE OF THE OLDEST BRANDS IN
THE BUSINESS.

SINCE 1988, JAMES HARVEST
SPORTSWEAR HAS PLAYED AN
IMPORTANT ROLE IN HELPING
THOUSANDS OF COMPANIES
CREATING A GREAT
TEAM-SPIRIT.



NEW



600 NAVY

HERITAGE JACKET 2111045 ♂

S-3XL

HERITAGE JACKET WOMAN 2121047 ♀

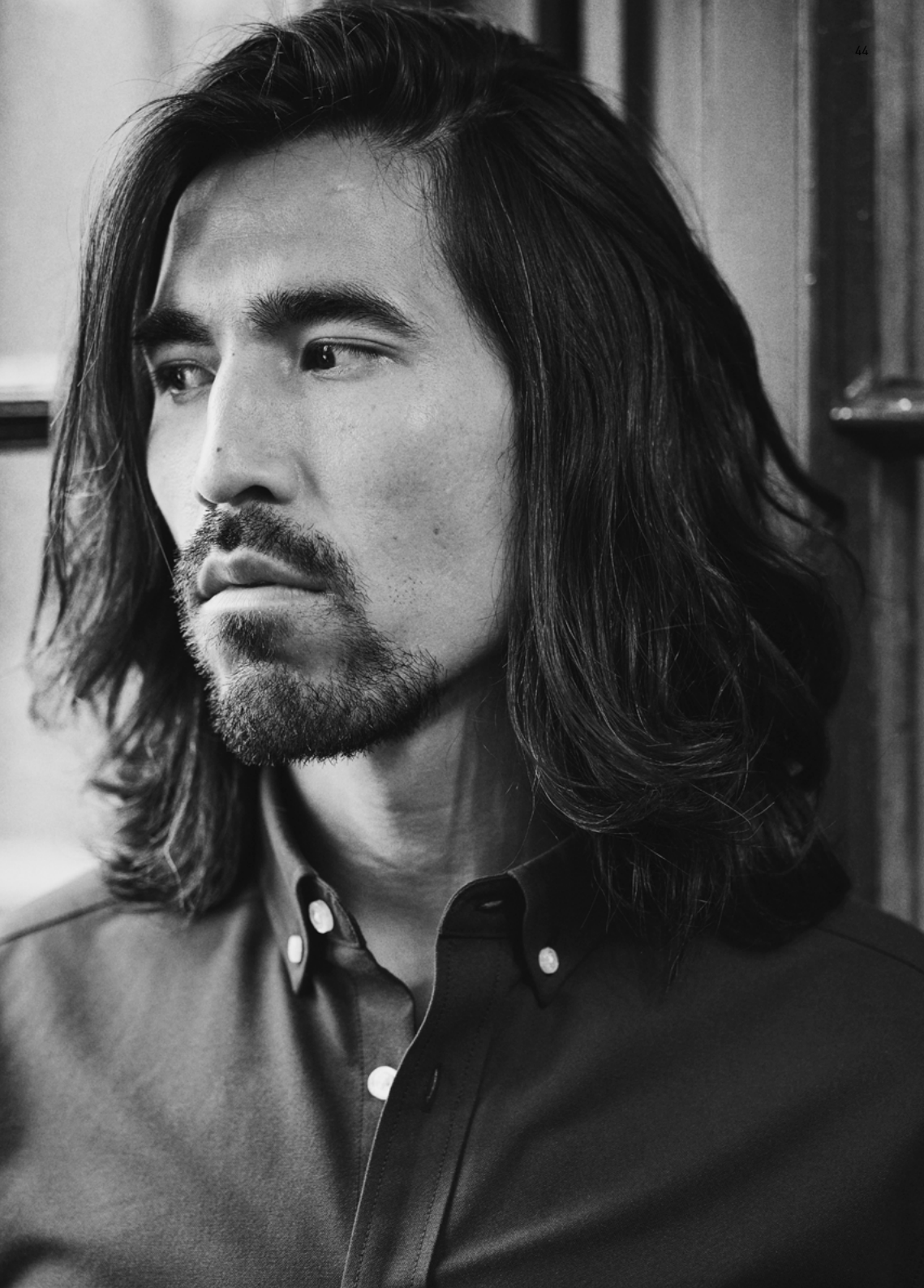
XS-XXL

Leather bomber jacket with embossed JHS logo on the back. Heavy rib at collar, hem and sleeve ends. Two zipped front pockets and two inside pockets.

SHELL FABRIC: 100% GOAT SUÈDE LEATHER

LINING: 100% RECYCLED POLYESTER





WOMAN



NEW



100 WHITE



500 LIGHT BLUE



600 NAVY



ALLEN OXFORD 2113042 ♂
ALLEN OXFORD WOMAN 2123033 ♀

S-4XL
XS-XXL

Oxford shirt with button down collar and chest pocket. Pearl coloured buttons attached with white button thread. Delivered in a biobased, compostable bag.

60 % COTTON / 40% RECYCLED POLYESTER, 180 G/M²

WOMAN

45

WOMAN



100 WHITE



501 LIGHT BLUE



601 NAVY



901 BLACK

BURLINGHAM 2113038 ♂
BURLINGHAM WOMAN 2123028 ♀

S-3XL
XS-XXL

Jersey shirt with oxford look. Woven details inside collar and side slits. Button down collar on men. Pearly colored buttons. Adjustable cuffs.

60% COTTON/40% POLYESTER, 165 G/M²



100 WHITE



500 LIGHTBLUE



600 NAVY



900 BLACK

ACTON 2113040 ♂
ACTON WOMAN 2123031 ♀

S-3XL
XS-XXL

Businessshirt with hidden button-down collar and adjustable sleeve cuffs. Easy care treated fabric. Tone in tone buttons. Modern fit.

55% COTTON, 45 POLYESTER, 145 G/M²





WOMAN

592 BLUE
DENIM992 BLACK
DENIM

JUPITER 2113035 ♂

JUPITER WOMAN 2123025 ♀

S-3XL

XS-XXL

Denim shirt. Player's choice fitting. Button down collar, adjustable sleeve cuffs. Chest pocket on both sides. Checked pattern contrast on the inside of yoke and cuffs. Slightly curved bottom hem

100% COTTON. DENIM LOOK, 135 G/M²

WOMAN



100 WHITE

503 LIGHTBLUE

603 NAVY

TOWNSEND 2113041 ♂

TOWNSEND WOMAN 2123032 ♀

S-3XL

XS-XXL

Linen-blend shirt with Mao collar and adjustable sleeve cuffs. Mother of pearl-look buttons. Contrast fabric on inside of yoke and cuffs. Yarn dyed..

74% COTTON, 26% LINEN; 125 G/M²






NEW



600 NAVY



900 BLACK

LANDER 2111044 

XXS-4XL

Lightly padded shirt jacket with covered press buttons and a chest pocket. Delivered in a biobased, compostable bag.

SHELL FABRIC & LINING: 50% RECYCLED POLYESTER, 50% POLYESTER, 100 G/M²
 PADDING: 100% REPREVE RECYCLED POLYESTER



600 NAVY



900 BLACK

HIGHWOODS 2111040

XXS-3XL

Unlined unisex overshirt in cotton twill fabric with a collar, yoke at the back and buttons down the front. Flap chest pockets with a button. Long sleeves with a sleeve placket and buttoned cuffs. Curved bottom hem.

100% COTTON, 300 G/M²



THE ASHLAND





FAMILY

THE ASHLAND FAMILY



WOMAN



140 GREY
MELANGE

600 NAVY

900 BLACK



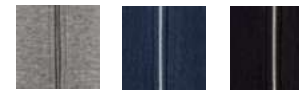
ASHLAND TURTLE 2112513 ♂
ASHLAND TURTLE WOMAN 2122510 ♀

S-4XL
XS-XXL

Turtle neck knitted sweater. 1x1 rib at the bottom, bottom sleeves and roller neck.
Oeko-Tex 100 certified.

100% COTTON, 12 GG

WOMAN



140 GREY
MELANGE

600 NAVY

900 BLACK



ASHLAND CARDIGAN 2112514 ♂
ASHLAND CARDIGAN WOMAN 2122511 ♀

S-4XL
XS-XXL

Knitted cardigan with metal zipper. 1x1 rib at collar, sleeves, and bottom seam (men).
Oeko-Tex 100 certified.

100% ORGANIC COTTON, 12 GG



THE ASHLAND FAMILY

WOMAN

609 BLUE
MELANGE909 ANTHRACITE
MELANGE140 GREY ME-
LANGE

600 NAVY



900 BLACK

Oeko-
TEX
STANDARD
100

ASHLAND V 2112507 ♂

ASHLAND V WOMAN 2122505 ♀

S-4XL

XS-XXL

Fine knit V-neck cotton sweater, 1 x 1 rib at cuff and hem. Double flatknit at neck.

100% COTTON, 12 GG

WOMAN

140 GREY ME-
LANGE

600 NAVY



900 BLACK

Oeko-
TEX
STANDARD
100

ASHLAND U 2112512 ♂

ASHLAND U WOMAN 2122509 ♀

S-4XL

XS-XXL

U-neck knitted sweater. 1x1 rib at the bottom and bottom sleeves. Double-folded edge at the neck. Oeko-Tex 100 certified.

100% COTTON, 12 GG



138 GREY
MELANGE

600 NAVY



900 BLACK

BROCKWAY 2112511 ♂

XS-3XL

Heavy knit Full-Zip Cardigan. Metal zip with leather-like zip puller. Elbow patches (flat knitted in same yarn). Knitted rib at bottom, btm sleeve and collar (double layer).

50% COTTON, 50% ACRYLIC, 7 GG, 3-PLY

138 GREY
MELANGE

600 NAVY



900 BLACK

FLATWILLOW 2112505 ♂

XS-3XL

Heavy knit 1/2-Zip Sweater. Metal zip with leather-like zip puller. Elbow patches (flat knitted in same yarn). Knitted rib at bottom, btm sleeve and collar (double layer).

50% COTTON, 50% ACRYLIC, 7 GG, 3-PLY



142 GREY
MELANGE

486 WINE



252 SAFFRON

605 DENIM
MELANGE

600 NAVY



900 BLACK

PONCHO 2127000 ♀

ONE SIZE

Fine knitted poncho with flatknitted edges. One size

50 % WOLL, 50% ACRYLIC (DRALON®). 250 G/M².



180 BEIGE



900 BLACK



802 CAMEL



591 BLUE

556 LIGHT
BLUE

936 GREY

704 MOSS
GREEN

600 NAVY



OFFICER 2116004 ♂ W29-30-31-32-33-34-36-38-40 / L32-36
 OFFICER WOMAN 2126006 ♀ W25-26-28-29-30-32-34-36 / L32-34

Modern, well-fitted pants in an agreeable, soft material for optimal comfort and freedom of movement. The combination of cotton and elastane ensures that the pants goes back to its original fit wash after wash. The fabric is treated with an enzyme treatment which pre-shrinks the material and makes it soft and dust repellent. Men: Welled back pockets with contrasting bartacking stitches. Women: Patched back pockets and adjusted side pockets for an extra feminine touch.

98% COTTON, 2% ELASTHAN, 280-290G/M², YKK ZIPPER





600 NAVY

L.A. 2137002 ♂

ONE SIZE

Cap in brushed cotton twill with precurved peak and adjustable Velcro strap at back.

100% COTTON



900 BLACK



600 NAVY

BURNWOOD 2137003 ♂

ONE SIZE

Cap in twill with vintage look. Curved screen and 6 panels. Adjustable with metal buckle at the back. One Size.

100% COTTON



900 BLACK







ON
SALE



AMERICAN U 2134017 ♂
AMERICAN U WOMAN 2124008 ♀

S-4XL
XS-XXL

U-neck T-shirt. 2-layered stretch rib in the neck. Oeko-Tex certified.

100% RING-SPUN, COMBED AND ENZYME-WASHED COTTON (MELANGE 95% COTTON, 5% VISCOSE)



RAWLINS 2145007 ♂

S-3XL

Mens polo with 3 buttons at front placket, side slits and contrast neck tape. Stitched eyelets at armpit, flat lock seams at chest, collar with contrast stripes and mesh ending.

97% COTTON 3% ELASTANE, 240 G/M²



AMERICAN V 2134018 ♂

S-4XL

Crewneck T-shirt for men and women. 2-layered stretch rib in the neck. Oeko-tex certified.

100% RING-SPUN, COMBED AND ENZYME-WASHED COTTON (MELANGE 95% COTTON, 5% VISCOSE)



RIPLEY 2145006 ♂

S-3XL

Mens polo with 3 buttons at front placket, side slits and contrast neck tape. 2 layer collar.

97% COTTON 3% ELASTANE, 240 G/M²



LAFAYETTE 2124001 ♀

S-XXL

Short-sleeved, round-neck ladies top with slim-fitted shape.

90% COTTON, 10% LYCRA®, 220 G/M²

DUKE 2132023 ♂

DUKE WOMAN 2122039 ♀

S-3XL

XS-XXL

Hood jacket. Metal zip at center front and pockets. Drawstring at hood.

100% TERRY COTTON (MELANGE: 95% COTTON, 5% VISCOSE), ENZYME WASH, 280 G/M²

CORNELL 2132022 ♂

CORNELL WOMAN 2122038 ♀

S-3XL

XS-XXL

Classic college crewneck sweater.

100% TERRY COTTON (MELANGE: 95% COTTON, 5% VISCOSE), ENZYME WASH, 280 G/M²

NOVAHILL 2132019 ♂

S-3XL

Sweatshirt jacket in heavy jersey with unbrushed inside. Contrasting tape in neck, along zipper and at bottom rib. Front pockets. Half-moon in neck with printed label. 1x1 rib with elastane in rib. Rib detail at neck.

80% COTTON 20% POLYESTER, 320 G/M²

ALDER HEIGHTS 2132024 ♂

ALDER HEIGHTS WOMAN 2122040 ♀

S-3XL

XS-XXL

College sweater. Certifications: Oeko-Tex, recycled polyester and ecological cotton.

85% ORGANIC COTTON, 15% RECYCLED PES, 300 G/M²

MELVILLE HEIGHTS 2132026 ♂

MELVILLE HEIGHTS WOMAN 2122042 ♀

S-3XL

XS-XXL

Full zip sweater with half-moon in the neck. Contrast, metal look nano membrane zip at center front and side pockets. Brushed on the inside. Ribbed ending at sleeves and bottom hem. Oeko-Tex 100 certified.

85% ORGANIC COTTON, 15% RECYCLED PES, 300 G/M²



WESTMORE 2112509 ♂ S - 3XL
WESTMORE WOMAN 2122508 ♀ XS-XXL

Fine knit V-neck sweater. Doublefolded single knit at neck. 1 x 1 rib at cuff and hem. 220 g/m².

100 % BARUFFA MERINO WOOL, 14 GG. 220 G/M².



PORTLAND 2112508 ♂ S-3XL
PORTLAND WOMAN 2122506 ♀ XS-XXL

Crew neck knitted sweater. 1 x 1 rib at neck, bottom and sleeves.

50% COTTON, 50% ACRYLIC (DRALON®), 12 GG. 230 G/M².



SONETTE 2112510 ♂ S-3XL
SONETTE WOMAN 2122507 ♀ XS-XXL

Fine knitted cardigan. Men's style with full zip and double knitted collar. Buttoned ladies cardigan with open round neck. Folded at sleeve and bottom hem.

50% COTTON, 50% ACRYLIC (DRALON®), 12 GG. 230 G/M².



REDDING 2113033 ♂
REDDING WOMAN 2123023 ♀

S-3XL
XS-XXL

Modern fit, high quality oxford shirt with Easy Care treatment. Tone-in-tone buttons and necktape in contrast colour.

100% COMBED COTTON, 135 G/M².



TRIBECA 2113032 ♂
TRIBECA WOMAN 2123022 ♀

S-3XL
XS-XXL

High quality shirt in combed cotton. Shirt in Easy Care treated fabric and enhanced lining seams, collar and sleeve ends. Check pattern with contrast fabric under collar, placket, sleeve and neck tape. Modern fit with cutting seams at back.

100% COMBED COTTON



RENO 2113031 ♂

S-3XL

High quality shirt in combed cotton. Shirt in easy care treated fabric and enhanced lining seams, collar and sleeve ends. Striped pattern with contrast fabric under collar, placket and bottom sleeve. Modern fit.

100% COMBED COTTON



TREEMORE 2113037 ♂
TREEMORE WOMAN 2123027 ♀

S-3XL
XS-XXL

Twill shirt in classic denim style cut. Western yoke and pockets with flaps. Soft collar, adjustable cuffs and curved bottom hem. Enzyme washed.

100% COTTON TWILL, 150 G/M².





DEER RIDGE 2131039 ♂

S-3XL

Quilted lightweight jacket with Thermolite® Micro. Fully lined. Hidden hood in the collar (invisible zip). Reversed coil zippers. Elastic binding at bottom hem and sleeves. The jacket can be tucked into the frontpocket as a travelbag.

SHELL FABRIC: 100% PES, CIRE FINISH ON THE INSIDE, 56 GSM WITH 100% PES PADDING (THERMOLITE® MICRO, 60 GSM). LINING: 100% NYLON



NORTHDERRY 2131500 ♂

S-3XL

NORTHDERRY WOMAN 2121500 ♀

XS-XXL

Thick fleece jacket with proven high resistance to pilling. The design is modern and sporty, fitting is modern and comfortable. Hood, contrasting flat lock seams and thumbhole at sleeve end. Elastic drawstring at hood and hem.

100% POLYESTER, 300 G/M²



ISLANDBLOCK 2131038 ♂

S-3XL

ISLANDBLOCK WOMAN 2121031 ♀

XS-XXL

Functional shell jacket with contemporary design and modern fitting. Zip under armhole makes for better ventilation. Sleeve pocket, front pockets, chest pocket and inner pocket. High abrasion resistant Cordura on elbows and lower back. High front collar, adjustable hood, reflective piping in body colour and contrasting YKK zips.

SHELL FABRIC: 94% POLYESTER, 6% ELASTHANE, 150 G/M² (WP 8000 / MVP 5000) & 100 % NYLON CORDURA, 223 G/M²

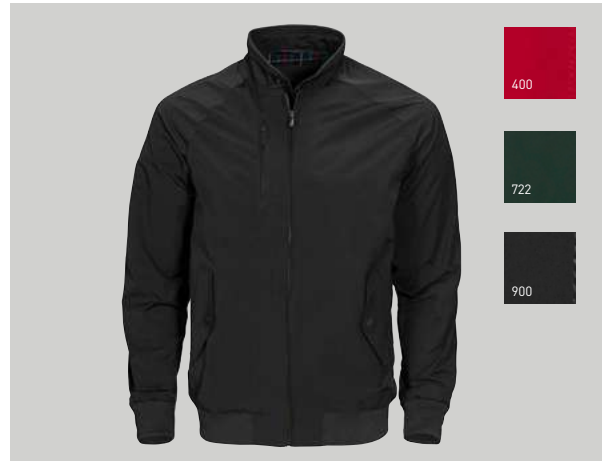


CONCORD 2131036 ♂
BRIDGEPORT 2121025 ♀

S-3XL
XS-XL

Functional jacket with zippers and piping in white contrast. Light, down like padding and soft polar fleece inside collar and front pockets. Waterproof, wind proof and highly breathable. Detachable hood and hidden ventilation zippers at sides. Elastic drawstring at hood and bottom hem. Two front pockets, one sleeve pocket and one inner pocket with cord opening for head phones.

100% NYLON



HARRINGTON 2111031 ♂

XS-3XL

Unisex jacket in timeless design. Metal zip at center front and right chest pocket. Outside pockets with pushbuttons. Knitted rib at bottom hem, bottom sleeves and top of collar. Lining at the back in checked contrast. Left inner pocket with zip and right inner pocket with button.

SHELL 50% COTTON, 50% POLYESTER. LINING: 75% CO, 25% POLYESTER. SLEEVE LINING: 100% POLYESTER.



HURSTBRIDGE 2111034 ♂

S-3XL

City coat with hood. Adjustable cord at waist and bottom hem. Leather-like stoppers and zip pullers. Cotton lined (sleeves in nylon). C6 water repellent finish. Black metal zippers at front and chest pockets. Buttoned windshield. Wide welted pockets with zippers at front. Zipped inner pocket.

SHELL FABRIC; 52% COTTON, 45% NYLON, 3% ELASTANE (SANDWICH CONSTR.). BODY LINING; 100% COTTON, POPLIN SLEEVE LINING; 100% NYLON



KINGSPORT 2111032 ♂
KINGSPORT WOMAN 2121033 ♀

S-3XL
XS-XXL

Light padded jacket with hidden hood in the collar. Two below pockets and two slanted chest pockets with visible metal zippers.

100% POLYESTER, PADDING 100% POLYESTER, 80 G/M²



HUNTINGVIEW 2111030 ♂
HUNTINGVIEW WOMAN 2121030 ♀

S-3XL
XS-XXL

Trendy quilted jacket. Five front pockets and two inside pockets. Soft fabric inside the two big front pockets to keep hands warm. Snap buttons with embossed Harvest logo at front pockets, cuffs and collar flap.

100% POLYESTER

