

GILDAN®

STYLE & COLOUR GUIDE

EUROPE 2026

SMART STYLE SMARTER CHOICES

43 Styles

97 Colours

Sizes: XS - 5XL

Fits: Classic to
Oversized Fit

FRESH ADDITIONS

2 No label styles

7 Fan Colors

1 New Heather

1 Prepared For Dye (PFD)

EXPANSIONS WITHIN

The Gildan Hammer® Line

GILDAN®

Just Smart™

WHAT'S NEW

New Looks, Bold Choices

7 Styles, 9 Colours & Endless Possibilities! There's something fresh for everyone.
Dive into our latest collection now!

GILDAN[®]
Ultra Cotton[™]

Adult Prepared
For Dye (PFD) T-Shirt
Page 11

Undyed and untreated,
our PFD tees are ready for
custom color and creativity.

2000 PFD



NO LABEL T-SHIRTS

Flip Ahead to
Discover More
Pages 8 & 11

No-label tees offer a
clean neckline, giving your
customer a versatile and
customisable option.

30NLB0



65ENLBO



SIZE LABEL

GILDAN[®]
HAMMER

Meet the New
Gildan Hammer[®]
Maxweight Collection
on Page 10

Heavy in weight.
Heavier in style.

75000



19000



19500



GILDAN[®] MADE WITH RESPECT[®]



Learn more about
our ESG practices.

OVER 20 YEARS

of sustainable
manufacturing

For over 20 years, Gildan's sustainability program has guided our efforts to integrate ESG practices into our long-term business strategy.

This Commitment Is Anchored In Five Key Pillars:



THE ENVIRONMENT



CIRCULARITY



OUR PEOPLE



OUR COMMUNITIES



TRANSPARENCY

Awards, Recognitions & Certifications

We proactively engage and collaborate with a wide variety of stakeholders. These relationships allow us to learn from one another, collaborate, and fulfill our mission of creating value in everything we do.

TIME Magazine & Corporate Knights

Proud to be named one of Canada's Best 50 Corporate Citizens for the 4th year — one of just two in our industry. Another milestone in our growing list of recognitions.



LOOKING FOR PRODUCT? DISCOVER OUR PRODUCT LOCATOR.

FIND INVENTORY NOW

www.gildan.com/eu/en/find-inventory



Gildan® Find Inventory Page

Finding the Gildan® products you want is as easy as point and click. Use our convenient online search tool to quickly locate preferred styles and colours currently available at distributors.



View Styles

search by style to browse your favorite products



Search By Colour

Search by style and colour to browse your favorite products.



Compare Styles

looking for options, compare styles and find inventory



Filter By Distributor

looking for options, compare styles and find inventory

NEW COLOURS

FAN TEXAS
ORANGE

FAN CANDY
PINK

FAN DARK
PURPLE

FAN DEEP
ROYAL

FAN
MARINE
GREEN

FAN DARK
GREEN

HEATHER
BLACK

FAN
CHARCOAL
HEATHER

GRAVEL



GILDAN®
SOFTSTYLE™

SF000 & SF500
NEW COLOUR
Heather Black



GILDAN®
LIGHT COTTON™
3000 & 3000B
NEW COLOURS

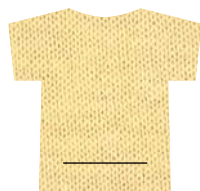
- | | |
|--|--|
|  Off White |  Daisy |
|  Daisy |  Orange |
|  Orange |  Red |
|  Cherry Red |  Safety Green |
|  Maroon |  Irish Green |
|  Helconia |  Military Green |
|  Sky |  Sky |
|  Sapphire |  Royal |
|  Safety Green |  Charcoal |
|  Irish Green | |
|  Forest Green | |
|  Sage | |
|  Ash Grey | |
|  Graphite Heather | |
|  Purple | |



GILDAN® COLOUR SWATCHES



Natural ■
2309C / 031



Vegas Gold ★
7507C / 019



S. Orange ▲
021C / 193



Azalea ▲
2045C / 071



Light Pink ▲
684C / 020



Orchid ★
2635C / 191



Off White ■
9161C / 4DG



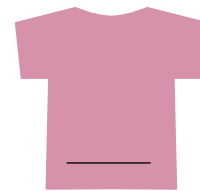
Yellow Haze ▲
7401C / 003



Orange ▲
2026C / 037



Heliconia ▲
213C / 010



NEW! Fan Candy Pink ■
507C / 27F



Violet ■
7452C / 087



Sand ★
7528C / 038



Cornsilk ▲
393C / 475



Antique Orange ■
7599C / 252



Pink Lemonade ▲
212C / D9G



Dusty Rose ▲
7605C / 3G1



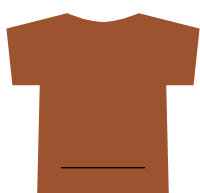
Metro Blue ■
2111C / 078



Tan ★
2316C / 091



Daisy ▲
122C / 098



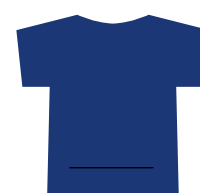
NEW! Fan Texas Orange ★
7586C / 32F



Heather Cardinal ▲
194C / 169



Paragon ★
7653C / 41G



NEW! Fan Deep Royal ■
3597C / 11F



Old Gold ★
2313C / 222



Gold ▲
1235C / 024



Red ■
199C / 040



Cardinal Red ▲
1955C / 011



Lilac ■
7679C / 284



Cobalt ■
2746C / 445



Mustard ▲
7407C / 6GG



Tangerine ★
2025C / 035



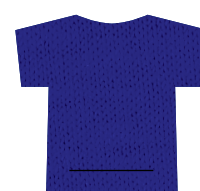
Cherry Red ■
187C / 194



Antique Cherry Red ▲
7427C / 246



Purple ■
2112C / 081



Deep Royal ■
288C / 765



T. Orange ★
7592C / 025



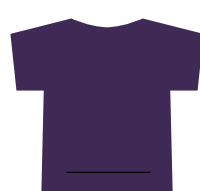
Sunset ▲
7578C / 285



Maroon ▲
7644C / 083



Garnet ▲
188C / 219



NEW! Fan Dark Purple ■
669C / 04F



Blackberry ■
276C / 278

***Discharge Printing Recommendation:**

★ Ideal ▲ Recommended ■ Not Recommended



Stone Blue ▲
2164C / 009



Light Blue ★
543C / 069



Sapphire ■
641C / 026



Pistachio ▲
577C / 168



Safety Green ■
382C / 188



Prairie Dust/Coyote Brown ★
7497C / 067



Indigo Blue ■
5405C / 080



Sky ▲
297C / 187



Heather Sapphire ■
7690C / 217



Mint Green ■
345C / 455



Lime ▲
7488C / 012



Brown Savana ▲
7531C / 266



Blue Dusk ★
7546C / 076



Carolina Blue ▲
659C / 109



Antique Sapphire ■
7706C / 254



Kelly Green ■
335C / 017



Kiwi ▲
2276C / 186



Olive ★
448C / 039



Heather Navy ★
432C / 170



Iris ■
660C / 056



Aquatic ▲
2460C / 8DG



Irish Green ■
2252C / 167



Sage ▲
2406C / 5GG



Cocoa ▲
7595C / 1DG



Navy ★
533C / 032



Heather Royal ■
2727C / 218



Tropical Blue ■
7712C / 280



Antique Irish Green ■
348C / 248



Heather Military Green ▲
416C / 231



Dark Chocolate ★
412C / 105



Dark Navy ▲
289C / 777



Royal ■
7686C / 051



Jade Dome ■
7717C / 029



NEW! Fan Dark Green ■
554C / 10F



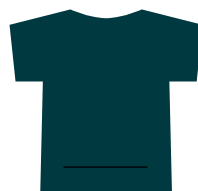
Military Green ▲
5615C / 106



NEW! Heather Black ★
4140C / 6GI



Midnight ▲
7708C / 286



NEW! Fan Marine Green ■
2217C / 07F



Antique Jade Dome ■
7715C / 249



Forest Green ★
5535C / 033



Tweed ▲
7540C / 276



Black ★
426C / 036



Graphite Heather ▲
CG 9C / 516



Charcoal ★
CG 10C / 042



NEW! Gravel ★
CG 8C / 267



Ice Grey ▲
WG1C / 023



White ■
000C / 030



Dark Heather ★
7545C / 108



NEW! Fan Charcoal Heather ■
4195C / 23F



Cement ▲
CG 6C / 2G6



Sport Grey ■
CG 7C / 095



Ash Grey ■
CG 3C / 093



Pitch Black ★
B6C / 3G9



Smoke ★
B7C / 342

LEGEND



Royal ■ ● — Pantone® Colour Code
Colour Name ● 7686C / 051 ● Gildan® Colour Code

Discharge Printing Recommendation:

- ★ Ideal
- ▲ Recommended
- Not Recommended

Note

The coated Pantone® colour code represents the closest available match for printing reference. Please refer to the actual fabric swatch for true colour matching.

Fiber content may vary by colour, see colour list for more details.

Gildan Hammer® Maxweight
Adult Hooded Sweatshirt

NEW
19500

9 colours
360 g/m²



FABRIC GUIDE

GILDAN® SOFTSTYLE™

100% RING SPUN COTTON
150 g/m² (WHITE 145 g/m²)

DECORATING TECHNIQUES

DTG	■
EMBROIDERY	■
HEAT TRANSFER / DTF	■
SCREEN PRINT	■
SUBLIMATION	■

GILDAN® SOFTSTYLE™ POLOS

100% RING SPUN U.S. COTTON
170 g/m² (WHITE 165 g/m²)

DECORATING TECHNIQUES

DTG	■
EMBROIDERY	■
HEAT TRANSFER / DTF	■
SCREEN PRINT	■
SUBLIMATION	■

GILDAN® SOFTSTYLE™ MIDWEIGHT

100% RING SPUN U.S. COTTON
185 g/m² (WHITE 180 g/m²)

DECORATING TECHNIQUES

DTG	■
EMBROIDERY	■
HEAT TRANSFER / DTF	■
SCREEN PRINT	■
SUBLIMATION	■

GILDAN® SOFTSTYLE™ FLEECE

80% RING SPUN U.S. COTTON/
20% POLYESTER
285 g/m² (WHITE 275 g/m²)

DECORATING TECHNIQUES

DTG	■
EMBROIDERY	■
HEAT TRANSFER / DTF	■
SCREEN PRINT	■
SUBLIMATION	■

GILDAN® LIGHT COTTON™ T-SHIRTS

100% U.S. COTTON
150 g/m² (WHITE 145 g/m²)

DECORATING TECHNIQUES

DTG	■
EMBROIDERY	■
HEAT TRANSFER / DTF	■
SCREEN PRINT	■
SUBLIMATION	■

GILDAN HAMMER® T-SHIRT

100% RING SPUN COTTON
205 g/m² (WHITE 200 g/m²)

DECORATING TECHNIQUES

DTG	■
EMBROIDERY	■
HEAT TRANSFER / DTF	■
SCREEN PRINT	■
SUBLIMATION	■

GILDAN HAMMER® POLO

100% RING SPUN U.S. COTTON
225 g/m² (WHITE 220 g/m²)

DECORATING TECHNIQUES

DTG	■
EMBROIDERY	■
HEAT TRANSFER / DTF	■
SCREEN PRINT	■
SUBLIMATION	■

GILDAN HAMMER® MAXWEIGHT T-SHIRT

100% RING SPUN U.S. COTTON
245 g/m² (WHITE 240 g/m²)

DECORATING TECHNIQUES

DTG	■
EMBROIDERY	■
HEAT TRANSFER / DTF	■
SCREEN PRINT	■
SUBLIMATION	■

GILDAN HAMMER® MAXWEIGHT SWEATSHIRTS/T-SHIRT

75% U.S. COTTON/
25% POLYESTER
360 g/m²

DECORATING TECHNIQUES

DTG	■
EMBROIDERY	■
HEAT TRANSFER / DTF	■
SCREEN PRINT	■
SUBLIMATION	■

GILDAN® HEAVY COTTON™

100% U.S. COTTON
180 g/m² (WHITE 175 g/m²)

DECORATING TECHNIQUES

DTG	■
EMBROIDERY	■
HEAT TRANSFER / DTF	■
SCREEN PRINT	■
SUBLIMATION	■

GILDAN® ULTRA COTTON™

100% U.S. COTTON
205 g/m² (WHITE 200 g/m²)

DECORATING TECHNIQUES

DTG	■
EMBROIDERY	■
HEAT TRANSFER / DTF	■
SCREEN PRINT	■
SUBLIMATION	■

GILDAN® DRYBLEND® POLOS

52% RING SPUN COTTON/50%
POLYESTER
205 g/m² (WHITE 200 g/m²)

DECORATING TECHNIQUES

DTG	■
EMBROIDERY	■
HEAT TRANSFER / DTF	■
SCREEN PRINT	■
SUBLIMATION	■

GILDAN® HEAVY BLEND™

50% U.S. COTTON/50%
POLYESTER
280 g/m² (WHITE 270 g/m²)

DECORATING TECHNIQUES

DTG	■
EMBROIDERY	■
HEAT TRANSFER / DTF	■
SCREEN PRINT	■
SUBLIMATION	■

Special Tips

DTG: The amount of pre-treat used on fabric blends might differ to the amount used on 100% cotton.

SUBLIMATION: Best results on 100% polyester, use it preferably on white or light colours. Use 50% polyester blends or higher for vintage and faded prints. Always check temperature settings to avoid melting of polyester.

Decorating Technique Exceptions Key

■ IDEAL ■ RECOMMENDED ■ NOT RECOMMENDED

GILDAN®

Just Smart™

TABLE OF CONTENTS

GILDAN®
SOFTSTYLE™ **06**

GILDAN®
HAMMER™ **10**

GILDAN®
LIGHT COTTON™ **11**

GILDAN®
Ultra Cotton™ **11**

GILDAN®
Heavy Cotton™ **12**

GILDAN®
Heavy Blend™ **13**

GILDAN®
DryBlend® **14**

FIT
GUIDE **15**

SIZE
CHART **16**

DECORATING
TECHNIQUES **18**

Gildan® has something for everyone

Built for comfort, made to last, and ready for anything. That's not just smart, it's Gildan® Just Smart™.

Explore our collection and find the fit for your needs.



64000
Adult T-Shirt

NEW
COLOURS

NOW IN
XS



Model is 5'10" - M - Fan Deep Royal

XS - 5XL 53 COLOURS

MODERN CLASSIC FIT
100% RING SPUN U.S. COTTON* 150 g/m²
COO: BANGLADESH, HAITI^o

64000L
Women's T-Shirt



Model is 5'11" - S - Antique Sapphire

LS - L3XL 16 COLOURS

SEMI-FITTED
100% RING SPUN U.S. COTTON* 150 g/m²
COO: BANGLADESH, NICARAGUA, HONDURAS^o

64000B
Youth T-Shirt

NEW
COLOURS



Model is 4'2" - M - Sand

YXS - YXL 25 COLOURS

MODERN CLASSIC FIT
100% RING SPUN U.S. COTTON* 150 g/m²
COO: BANGLADESH, NICARAGUA^o

64V00
Adult V-Neck T-Shirt



Model is 6'0" - M - Royal

S - 3XL 9 COLOURS

MODERN CLASSIC FIT
100% RING SPUN U.S. COTTON* 150 g/m²
COO: BANGLADESH, HONDURAS^o

64V00L
Women's V-Neck T-Shirt



Model is 5'10" - S - Sport Grey

LS - L2XL 6 COLOURS

SEMI-FITTED
100% RING SPUN U.S. COTTON* 150 g/m²
COO: BANGLADESH, HONDURAS^o

64400
Adult Long Sleeve T-Shirt

NEW
COLOURS



Model is 6'0" - M - Fan Deep Royal

S - 3XL 12 COLOURS

MODERN CLASSIC FIT
100% RING SPUN U.S. COTTON* 150 g/m²
COO: BANGLADESH, HONDURAS, GUATEMALA^o



Full collection shown at
gildan.com/eu

10 T-SHIRTS
2 TANKS

2 POLOS
6 SWEATS

^o COO (Country of Origin). It refers to the country where a product was manufactured, produced or grown.

*Fibre content varies by colour, see colour list for exceptions on pages 2 - 3. Not all sizes available in all colours. For colour offering, see pages 2 - 3



RING SPUN
SOFT



TEAR AWAY
LABEL



ENHANCED
PRINTABILITY



SMOOTHER
SURFACE



SOFTNESS

64200 Adult Tank



Model is 6'0" - M - White

S - 2XL

6 COLOURS

MODERN CLASSIC FIT
100% RING SPUN U.S. COTTON*
COO: BANGLADESH[◊]

150 g/m²

64200L Women's Tank



Model is 5'7" - S - Azalea

LS - L2XL

6 COLOURS

SEMI-FITTED
100% RING SPUN U.S. COTTON*
COO: BANGLADESH[◊]

150 g/m²

64800 Adult Pique Polo



Model is 6'3" - M - Black

S - 4XL

14 COLOURS

MODERN CLASSIC FIT
100% RING SPUN U.S. COTTON*
COO: BANGLADESH[◊]

170 g/m²

64800L Women's Pique Polo



Model is 5'9" - S - Navy

LS - L2XL

9 COLOURS

SEMI-FITTED
100% RING SPUN U.S. COTTON*
COO: BANGLADESH[◊]

170 g/m²



Full collection shown at
gildan.com/eu

[◊] COO (Country of Origin). It refers to the country where a product was manufactured, produced or grown.

*Fibre content varies by colour, see colour list for exceptions on pages 2 - 3. Not all sizes available in all colours. For colour offering, see pages 2 - 3

65ENLBO
Midweight Adult No Label
Enzyme Wash T-Shirt

NEW
NO LABEL



Model is 6'2" - L - Sport Grey

XS - 5XL **8 COLOURS**

MODERN CLASSIC FIT
100% RING SPUN COTTON* **185 g/m²**
COO: BANGLADESH[◊]

65000
Midweight Adult T-Shirt



Model is 6'2" - L - Royal

S - 5XL **22 COLOURS**

MODERN CLASSIC FIT
100% RING SPUN U.S. COTTON* **185 g/m²**
COO: BANGLADESH[◊]

65000L
Midweight Women's T-Shirt



Model is 5'7" - M - Red

LS - L3XL **10 COLOURS**

SEMI-FITTED
100% RING SPUN U.S. COTTON* **185 g/m²**
COO: BANGLADESH[◊]

65000B
Midweight Youth T-Shirt



Model is 4'11" - S - Orange

YXS - YXL **11 COLOURS**

MODERN CLASSIC FIT
100% RING SPUN U.S. COTTON* **185 g/m²**
COO: BANGLADESH[◊]



Full collection shown at
gildan.com/eu

[◊] COO (Country of Origin). It refers to the country where a product was manufactured, produced or grown.

*Fibre content varies by colour, see colour list for exceptions on pages 2 - 3. Not all sizes available in all colours. For colour offering, see pages 2 - 3

SF500
Midweight Fleece Adult Hoodie

NEW
COLOUR

NOW IN
XS



Model is 6'2" - L - OffWhite

XS - 5XL 38 COLOURS

CLASSIC FIT
80% RING SPUN U.S. COTTON 285 g/m²
20% POLYESTER*
COO: BANGLADESH, EL SALVADOR, GUATEMALA^o

SF500B
Midweight Fleece Youth Hoodie



Model is 4'9" - M - Red

YXS - YXL 15 COLOURS

CLASSIC FIT
80% RING SPUN U.S. COTTON 285 g/m²
20% POLYESTER*
COO: BANGLADESH^o

SF000
Midweight Fleece Adult Crewneck

NEW
COLOUR

NOW IN
XS



Model is 6'2" - M - Heather Black

XS - 4XL 28 COLOURS

CLASSIC FIT
80% RING SPUN U.S. COTTON 285 g/m²
20% POLYESTER*
COO: BANGLADESH, GUATEMALA^o

SF600
Midweight Fleece Adult Full Zip Hoodie



Model is 6'2" - M - Sand

S - 4XL 12 COLOURS

CLASSIC FIT
80% RING SPUN U.S. COTTON 285 g/m²
20% POLYESTER*
COO: EL SALVADOR, BANGLADESH^o

SF008
Midweight Fleece Adult 1/4 Zip Sweatshirt



Model is 6'2" - M - Military Green

S - 3XL 10 COLOURS

CLASSIC FIT
80% RING SPUN U.S. COTTON 285 g/m²
20% POLYESTER*
COO: BANGLADESH, GUATEMALA^o

SF100
Midweight Fleece Adult Pocket Sweatpants



Model is 6'2" - M - Stone Blue

S - 3XL 8 COLOURS

CLASSIC FIT
80% RING SPUN U.S. COTTON 285 g/m²
20% POLYESTER*
COO: BANGLADESH^o



Full collection shown at
gildan.com/eu

10 T-SHIRTS
2 TANKS

2 POLOS
6 SWEATS

^o COO (Country of Origin). It refers to the country where a product was manufactured, produced or grown.

*Fibre content varies by colour, see colour list for exceptions on pages 2 - 3. Not all sizes available in all colours. For colour offering, see pages 2 - 3

30NLBO
Adult No Label T-Shirt

NEW
NO LABEL



XS – 5XL 2 COLOURS
MODERN CLASSIC FIT
100% U.S. COTTON* 150 g/m²
COO: BANGLADESH[°]

3000
Adult T-Shirt

15 NEW COLOURS
NOW IN XS



XS – 5XL 25 COLOURS
MODERN CLASSIC FIT
100% U.S. COTTON* 150 g/m²
COO: BANGLADESH, NICARAGUA, HAITI[°]

3000B
Youth T-Shirt

NEW COLOURS



YXS – YXL 15 COLOURS
MODERN CLASSIC FIT
100% U.S. COTTON* 150 g/m²
COO: BANGLADESH, NICARAGUA[°]

2000 PFD
Adult T-Shirt

NEW



S – 3XL 1 COLOUR
CLASSIC FIT
100% U.S. COTTON* 205 g/m²
COO: NICARAGUA[°]

2000
Adult T-Shirt



S – 5XL 51 COLOURS
CLASSIC FIT
100% U.S. COTTON* 205 g/m²
COO: HONDURAS, DOMINICAN REPUBLIC, HAITI, NICARAGUA[°]

2400
Adult Long Sleeve T-Shirt



S – 5XL 21 COLOURS
CLASSIC FIT
100% U.S. COTTON* 205 g/m²
COO: HONDURAS, NICARAGUA[°]



GILDAN[®] LIGHT COTTON™:
3 T-SHIRTS



GILDAN[®] ULTRA COTTON™:
3 T-SHIRTS

Full collection shown at
gildan.com/eu

*Fibre content varies by colour, see colour list for exceptions on pages 2 - 3. Not all sizes available in all colours. For colour offering, see pages 2 - 3

5000
Adult T-Shirt



S - 5XL 56 COLOURS

MODERN CLASSIC FIT
100% U.S. COTTON* 180 g/m²
COO: HONDURAS, DOMINICAN REPUBLIC,
GUATEMALA, HAITI, NICARAGUA[◊]

5000L
Women's T-Shirt



LS - L3XL 11 COLOURS

SEMI-FITTED
100% U.S. COTTON* 180 g/m²
COO: HONDURAS, NICARAGUA[◊]

5000B
Youth T-shirt



YXS - YXL 34 COLOURS

CLASSIC FIT
100% U.S. COTTON* 180 g/m²
COO: DOMINICAN REPUBLIC, HAITI,
NICARAGUA[◊]

5100P
Toddler T-Shirt



2T - 6T 8 COLOURS

CLASSIC FIT
100% U.S. COTTON* 180 g/m²
COO: NICARAGUA[◊]



18500
Adult Hooded Sweatshirt

NEW COLOURS



Model is 6'0" - S - M - Fan Dark Green

S - 5XL 39 COLOURS

CLASSIC FIT
50% U.S. COTTON 280 g/m²
50% POLYESTER*
COO: HONDURAS, GUATEMALA, NICARAGUA,
EL SALVADOR^o

18500B
Youth Hooded Sweatshirt

NEW COLOURS



Model is 4'2" - S - Light Pink

YXS - YXL 20 COLOURS

CLASSIC FIT
50% U.S. COTTON 280 g/m²
50% POLYESTER*
COO: HONDURAS^o

18000
Adult Crewneck Sweatshirt

NEW COLOURS



Model is 6'2" - M - Red

S - 5XL 31 COLOURS

CLASSIC FIT
50% U.S. COTTON 280 g/m²
50% POLYESTER*
COO: HONDURAS, GUATEMALA, NICARAGUA,
EL SALVADOR^o

18000B
Youth Crewneck Sweatshirt



Model is 4'11" - S - Sport Grey

YXS - YXL 9 COLOURS

CLASSIC FIT
50% U.S. COTTON 280 g/m²
50% POLYESTER*
COO: HONDURAS^o

18600
Adult Full Zip Hooded Sweatshirt



Model is 6'2" - M - Purple

S - 5XL 16 COLOURS

CLASSIC FIT
50% U.S. COTTON 280 g/m²
50% POLYESTER*
COO: HONDURAS, EL SALVADOR, GUATEMALA^o

18900
Fleece Stadium Blanket



ONE SIZE 7 COLOURS

50% U.S. COTTON 280 g/m²
50% POLYESTER*
COO: EL SALVADOR^o



Full collection shown at
gildan.com/eu

5 SWEATSHIRTS
1 BLANKET

^o COO (Country of Origin). It refers to the country where a product was manufactured, produced or grown.

*Fibre content varies by colour, see colour list for exceptions on pages 2 - 3. Not all sizes available in all colours. For colour offering, see pages 2 - 3

8800
Adult Polo



Model is 6'2" - S - M - Carolina Blue

S - 3XL

13 COLOURS

CLASSIC FIT
52% RING SPUN COTTON
48% POLYESTER*
COO: BANGLADESH^o

205 g/m²

8800B
Youth Polo



Model is 4'9" - M - Sport Grey

YS - YXL

6 COLOURS

CLASSIC FIT
52% RING SPUN COTTON
48% POLYESTER*
COO: BANGLADESH^o

205 g/m²



Full collection shown at
gildan.com/eu

2 POLOS

*Fibre content varies by colour, see colour list for exceptions on pages 2 - 3. Not all sizes available in all colours. For colour offering, see pages 2 - 3

FIT GUIDE

Adult fit



MODERN-CLASSIC FIT

Women's fit



SEMI-FITTED

Youth fit



MODERN-CLASSIC FIT



CLASSIC FIT



CLASSIC FIT



CLASSIC FIT



OVERSIZED FIT

* A-Line - Rounded neckline, tapered short sleeves, relaxed A-Line shape through the body and longer length with wider hems.

SIZING CHART

* Measurements shown are chest x body | * Measurements shown are in cm

STYLE #	XS/LXS	S/LS	M/LM	L/LL	XL/LXL	2XL/L2XL	3XL	4XL	5XL
T-SHIRTS									
H000		46x71	51x74	56x76	61 x79	66x81	71x84	76x86	
2000 PFD NEW!		46x74	51x77	56x81	61x85	66x88	71x90		
2000/ 2400		46x71	51x74	56x76	61 x79	66x81	71x84	76x86	81x89
30NLBO NEW!	41x69	46x71	51x74	56x76	61 x79	66x81	71x84	76x86	81x89
3000	41x69	46x71	51x74	56x76	61 x79	66x81	71x84	76x86	81x89
5000		46x71	51x74	56x76	61 x79	66x81	71x84	76x86	81x89
5000L		43x65	48x66	53x69	58x71	64x72	69x74		
64000	41x69	46x71	51x74	56x76	61 x79	66x81	71x84	76x86	81x89
64V00/64400		46x71	51x74	56x76	61 x79	66x81	71x84		
64000L/64V00L		43x65	48x66	53x69	58x71	64x72	69x74		
64200		46x71	51x74	56x76	61 x79	66x81			
64200L		43x64	46x66	50x69	52x70	58x72			
65ENLBO NEW!	41x69	46x71	51x74	56x76	61 x79	66x81	71x84	76x86	81x89
65000		46x71	51x74	56x76	61 x79	66x81	71x84	76x86	81x89
65000L		43x65	48x66	53x69	58x71	64x72	69x74		
75000 NEW!		50x71	53x74	58x76	64x79	69x81	74x84		

STYLE #	2T	3T	4T	5T	6T	YXS	YS	YM	YL	YXL
YOUTH T-SHIRTS										
3000B						41 x53	43x57	46x61	48x64	51x67
5000B						41 x53	43x57	46x61	48x64	51x67
64000B						36x46	41 x52	43x56	46x60	48x64
65000B						36x46	41 x52	43x56	46x60	48x64
5100P	28x38	30x41	33x43	36x46	38x48					

STYLE #	XS/LXS/YXS	S/LS/YS	M/LM/YM	L/LL/YL	XL/LXL/YXL	2XL/L2XL	3XL	4XL	5XL
POLOS									
85800		51x71	55x75	57x77	60x80	64x83	67x85		
8800		48x71	53x75	58x77	64x80	69x83	74x84		
8800B		41x50	43x55	46x60	48x65				
64800		51x71	55x75	57x78	60x80	64x83	67x85	71x88	
64800L		42x65	45x67	51x70	55x72	59x75			

STYLE #	XS/LXS/YXS	S/LS/YS	M/LM/YM	L/LL/YL	XL/LXL/YXL	2XL/L2XL	3XL	4XL	5XL
SWEATS									
18000/18500		51x69	56x71	61x74	66x76	71x79	76x81	81x84	86x86
18600		49x69	54x71	59x74	64x76	69x79	74x81	79x84	82x86
18000B/18500B	41x50	43x54	46x57	48x61	51x65				
19000/19500 NEW!		51x76	56x77	61x79	66x81	71x84	76x86	81x89	
SF008		51x71	56x74	61x76	66x79	71x81	76x84		
SF100		75x38	75x41	76x43	77x46	77x48	79x51		
SF000/SF500	46x69	51x71	56x74	61x76	66x79	71x81	76x84	81x86	
SF500B	41x51	43x55	46x58	48x62	51x66				
SF600		48x71	53x74	58x76	64x79	69x81	74x84	79x86	

STYLE #	SIZE
ACCESSORY	
18900	OneSize:127x152

DECORATOR'S

HEAT TRANSFER/ DIRECT TO FILM (DTF)

Both Heat Transfer and DTF printing are heat-based methods ideal for detailed, colourful graphics. DTF's use of transfer film offers added flexibility and a soft, durable finish across various fabrics.



DIRECT TO GARMENT

Direct to Garment printing (DTG) is printing on textiles using inkjet technology which usually utilizes specialized water-based inks. DTG is particularly effective for short runs, full colour printing, or for reproducing fine detail.

EMBROIDERY

Embroidery is sewing a design, type or logo onto a garment with special thread. This technique gives garments a higher perceived value and works particularly well on heavier weight garments such as fleece.



TECHNIQUES

TIE DYE

The process begins with damp fabric, which is gathered and secured with rubber bands or string to create resist areas where dye will not penetrate. Dyes are then applied to exposed sections, either in a random or patterned way, allowing colours to blend naturally. After the fabric absorbs the dye, it is left to set often for several hours to ensure colourfastness. Finally, the fabric is rinsed, washed, and dried, revealing bold, one-of-a-kind designs that are almost impossible to duplicate.



SUBLIMATION

Sublimation printing is a digital process that uses heat and pressure to turn inks into gas, which then penetrates materials for a permanent imprint. This method results in high-quality, vibrant prints that are less prone to cracking or fading.

SCREEN PRINT

Screen Printing (or Silk Screening) is a technique that uses stencils and ink to create designs on garments. It is the most economical method for producing large quantities that involve cotton or cotton-blend garments.



Gildan Hammer® Maxweight Adult Crewneck Sweatshirt

NEW
19000

9 colours
360 g/m²

